

## HOW WE ACCEPT SAMPLES FOR PESTICIDE RESIDUE ANALYSIS

### Raw Agricultural Commodity:

Fresh  
Must be properly packed in  
aluminum foil / plastic bag and  
labeled  
Minimum required weight is 1 kg

### Fish:

Fresh  
Must be properly packed in  
aluminum foil / plastic bag placed  
in iced box and labeled  
Minimum required weight is 1 kg

### Water:

Must be placed in amber glass  
bottle  
Minimum required volume is 2 L

### Soil:

Must be placed in plastic bag  
Minimum required weight is 1 kg

### Processed Agricultural Commodity

Packaging of manufacturer /  
plastic bag / boxes  
Minimum required weight is 1 kg



## NATIONAL PESTICIDE ANALYTICAL LABORATORY AND SATELLITES DIRECTORY

### Luzon:

National Pesticide Analytical Laboratory (NPAL)  
Bureau of Plant Industry  
Visayas Avenue, Diliman, Quezon City  
Telefax: (02) 425-1365  
Tel. No.: (02) 426-3366  
e-mail address: lsdnpal2010@gmail.com

Baguio-Pesticide Analytical Laboratory  
Baguio National Crop Research and  
Development Center  
Guisad Valley, Baguio City  
Tel No.: (074) 442-2668

### Visayas:

Cebu-Pesticide Analytical Laboratory  
Mandaue Experiment Station  
Mandaue City  
Tel No.: (032) 345-2861

### Mindanao:

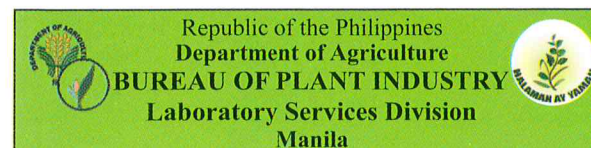
Cagayan de Oro-Pesticide Analytical Laboratory  
Macabalan, Cagayan de Oro City  
Tel No.: (086) 856-8702

Davao-Pesticide Analytical Laboratory  
Davao National Crop Research and  
Development Center  
Bago Oshiro, Davao City  
Tel. No.: (082) 293-0220



For More Information Visit or Call:

Office of the Chief  
Laboratory Services Division  
Bureau of Plant Industry  
692 San Andres St. Malate, Manila  
Telefax: (02) 523-7154  
Tel. No. (02) 524-0708/(02) 525-7388/  
(02) 524-0779



**WE OFFER PESTICIDE RESIDUE  
AND PESTICIDE FORMULATED  
PRODUCT ANALYSES FOR A  
HEALTHIER ENVIRONMENT AND  
CLEANER FRUITS AND  
VEGETABLES**



## WHY THE ANALYSES?

The analysis of locally produced and exportable agricultural commodities for pesticide residues provides safe and quality food that can be more globally competitive. Likewise, the analysis of the pesticide formulated product which guarantees the correct specifications on the label of the active ingredients are strictly followed. It is essential to update the screening procedures of both the pesticide residues analysis and the pesticide formulated products. To ensure the quality of the analytical services the laboratories are conducting, international collaborative studies are being undertaken.

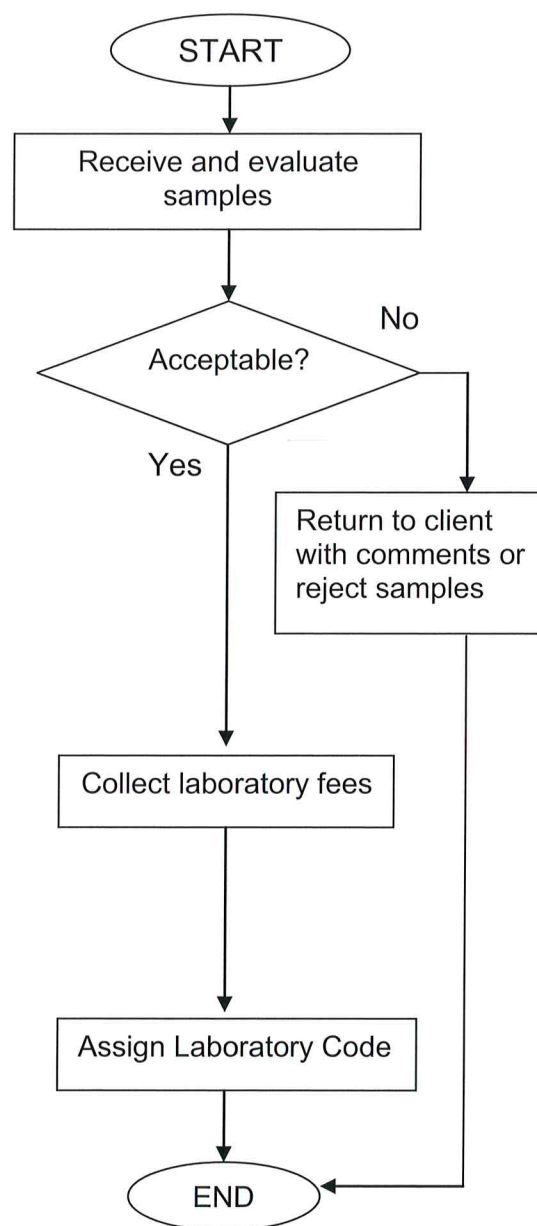
## SERVICES

Provide services in pesticide residues in agricultural crops and products.

Provide analytical services for pesticide formulated products



## THIS IS HOW WE DO IT



## HOW WE ACCEPT SAMPLES FOR PESTICIDE FORMULATED PRODUCT ANALYSIS

### Pesticide Formulated Products

#### Powder

Packaging of manufacturer / plastic bag / containers / wide mouth bottles / boxes / aluminum pouch

Minimum weight requirement range is 50-100 grams

#### Liquid

Packaging of manufacturer / plastic containers / bottles

Minimum volume requirement is 50-100 mL

### Technical Material

#### Powder

Packaging of manufacturer / plastic bag / containers / wide mouth bottles / boxes / aluminum pouch

Minimum weight requirement range is 10 grams

#### Liquid

Packaging of manufacturer / plastic containers / bottles

Minimum volume requirement is 10 mL

